

**EUREKA**

# SUREKA GROUP

---

## ABHINAV INFRABUILD PVT LTD

207- 208, Industry House, A.B. Road,  
Indore. Phone No : +91-731- 4076601,  
4989601  
Cell No. +91 7049027000

Email : [surefloors@surekaindia.com](mailto:surefloors@surekaindia.com)



**ABHINAV INFRABUILD PVT. LTD.**

📍 207-208 Industry House, 15, Old Palasia, A.B. Road, Indore - 452 018 (M.P.)

☎ +91-731-4989601/4076601 ✉ admin@surekaindia.com 🌐 www.surekaindia.com

**SURE FLOORS SERVICES**

**SUPER FLAT FLOORS | FM-2 FLOORS AS PER TR-34 | LASER SCREED FLOORING | JOINTLESS/ SEAMLESS FLOORS  
DM FLOORS | DENSIFICATION/ POLISHED CONCRETE FLOORS | FIBER REINFORCED (SFRC) CONCRETE FLOORS | VNA FLOORS**

The logo for SUREKA, featuring the word "SUREKA" in white, bold, uppercase letters with a blue outline, set against a blue background.

## About Us

Starting our journey in 1937 as marketers of textile mill store supplies, we have over the decades diversified into various construction activities including specialised industrial concrete flooring.


We are Central India's only company to have Laser Screed which is the latest and most advanced concrete flooring technology enabling us to deliver best in class concrete floors in least possible time frame. This combined with our highly skilled planning and execution team makes us preferred partners for any flooring requirement.

## Our Mission

### Our Mission is to –

- ✓ To become a leader and a model participant in the development of the concrete flooring industry.
- ✓ To build, maintain and perpetuate a loyal and continuing relationship with every client through total commitment to quality, transparency and timely completion.

### Our Assurance-

- ✓ Quality and safety
  - ✓ Excellent project planning and monitoring
  - ✓ Sound experience and strong infrastructure
  - ✓ Value addition to customer's vision
- 
- A solid blue horizontal bar at the bottom of the slide.

## All the flooring solutions :-

### ➤ World's latest and advanced technology - Laser Screed Flooring

It does not requires guide rails or channels to screed concrete , it eliminates the need of having form work at regular intervals except at day joint thus making wide bay construction of pour size 500 to 2000 sq mtr. This reduces construction of joints by around 80% which is the weakest section of a floor. Large pour floors can be constructed for free movement in which MHE can travel randomly in any direction.

### ➤ Truss Screed Flooring

With Truss / Flex Screed we can lay floor bay of width up to 12 meters. Truss Screed moves on guide rails which are leveled & fixed with automated laser leveler. We finish floors with Ride On Trowels.

## Plants & Equipment

- ✓ Laser Screed Machine (Latest S-158 C)
- ✓ Truss/Flex Screeds (Up to 12 mtr. width)
- ✓ Ride on Trowels (ROT)
- ✓ Mototorised Power Trowels
- ✓ Groove Cutting Machines
- ✓ Bull Float
- ✓ Bump cutter

And other required tools and equipments..

**OUR FLOORS ARE OCCUPIED BY :-**

- ✓ Flipkart, Empire logi Park , Indore
- ✓ Duroflex , Empire logi Park , Indore
- ✓ P&G , Mandideep Bhopal
- ✓ Dabur India Ltd. Indore.
- ✓ Flipkart, (Life care logistics ) pirkaradia, near Dewas
- ✓ Hindustan Equipments Pvt Ltd, Indore
- ✓ Mysore deep, Perfumery House indore
- ✓ Best Corp. Ltd. Ujjain
- ✓ Colgate, (Life care logistics ) pirkaradia, near Dewas
- ✓ Abbott , (Life care logistics ) pirkaradia, near Dewas
- ✓ Tata Chemicals Ltd , near Dewas.
- ✓ Shivani Detergents pvt. Ltd. Pithampur
- ✓ Shivani Truepack Pvt. Ltd. Pithampur.
- ✓ Syncom Formulation Ltd. Pithampur.
- ✓ Welspun Ltd, Gandhidham

**And many more reputed organisations..**

OUR FLOORS ARE OCCUPIED BY :-



Flipkart



Colgate



Abbott



duroflex  
mattresses

MDPH



Procter & Gamble

SHI ANI  
Detergents Pvt. Ltd.



SYNCOM  
FORMULATIONS  
(INDIA) LIMITED



APOLLO  
CREATIONS PVT. LTD.  
Building ideas. Spreading smiles



TATA  
TATA CHEMICALS LIMITED

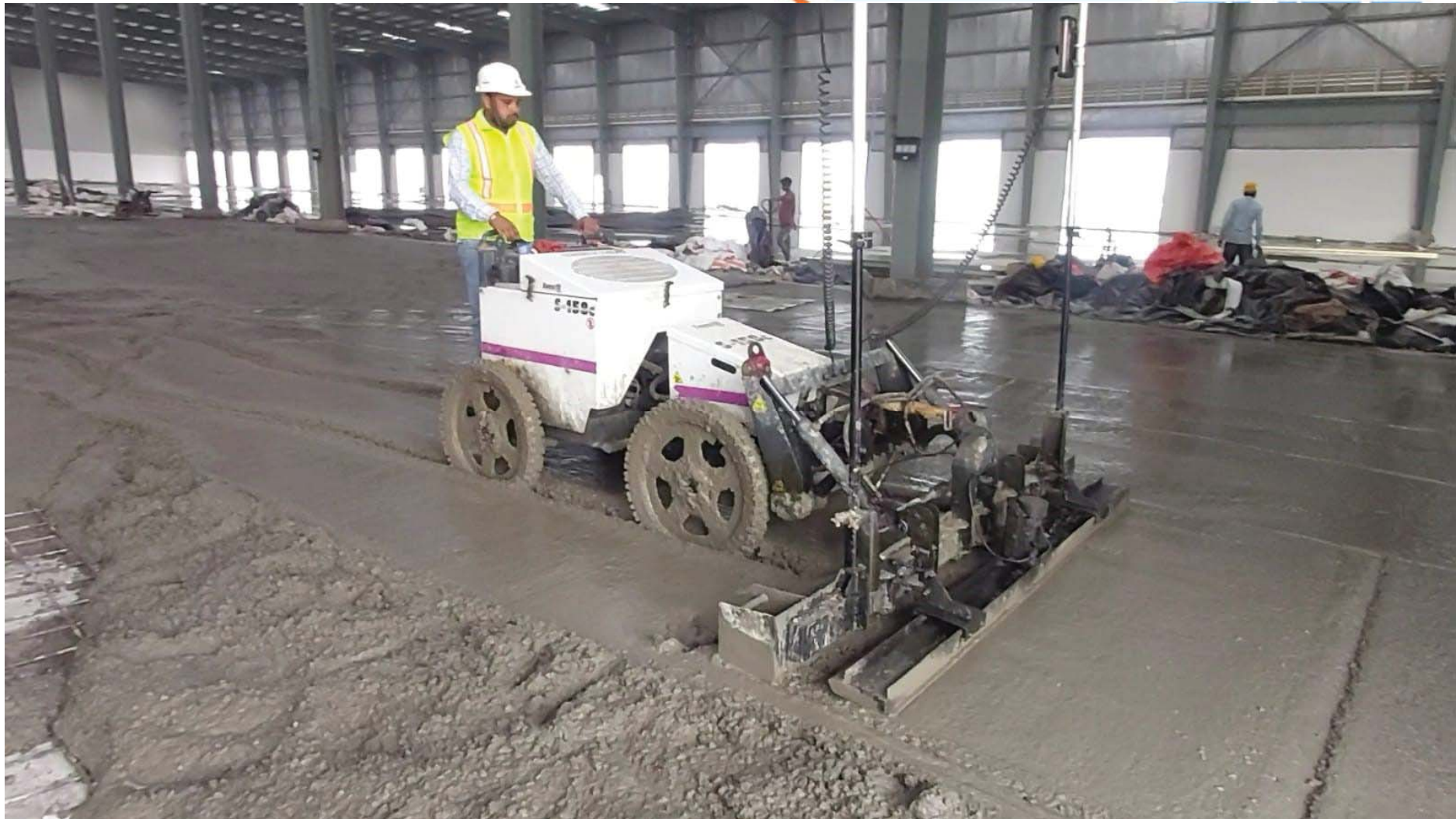
adani™





## PICTURE GALLERY

**SUREKA**



**SUREKA**



**SUREKA**



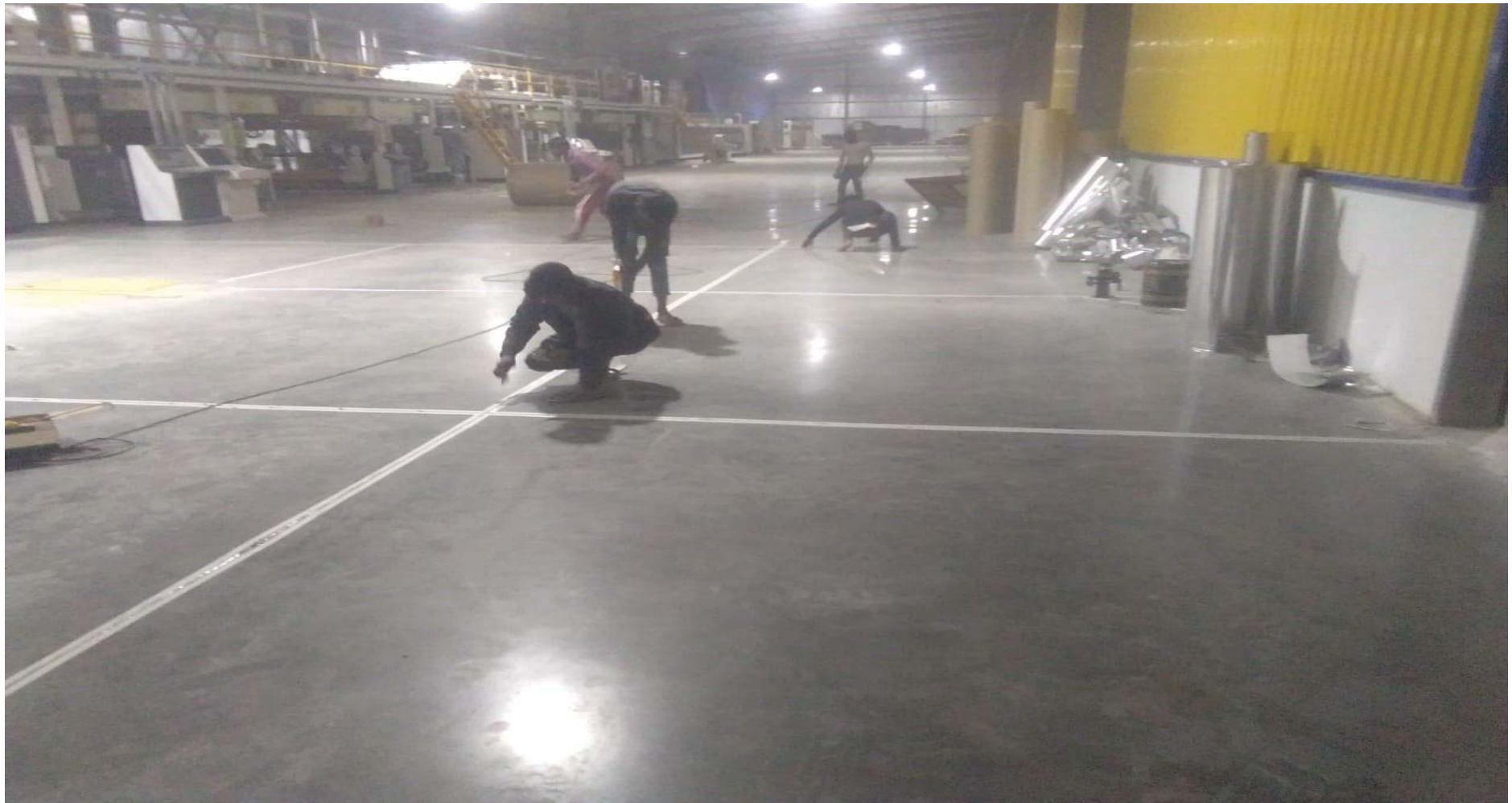
**SUREKA**



**SUREKA**



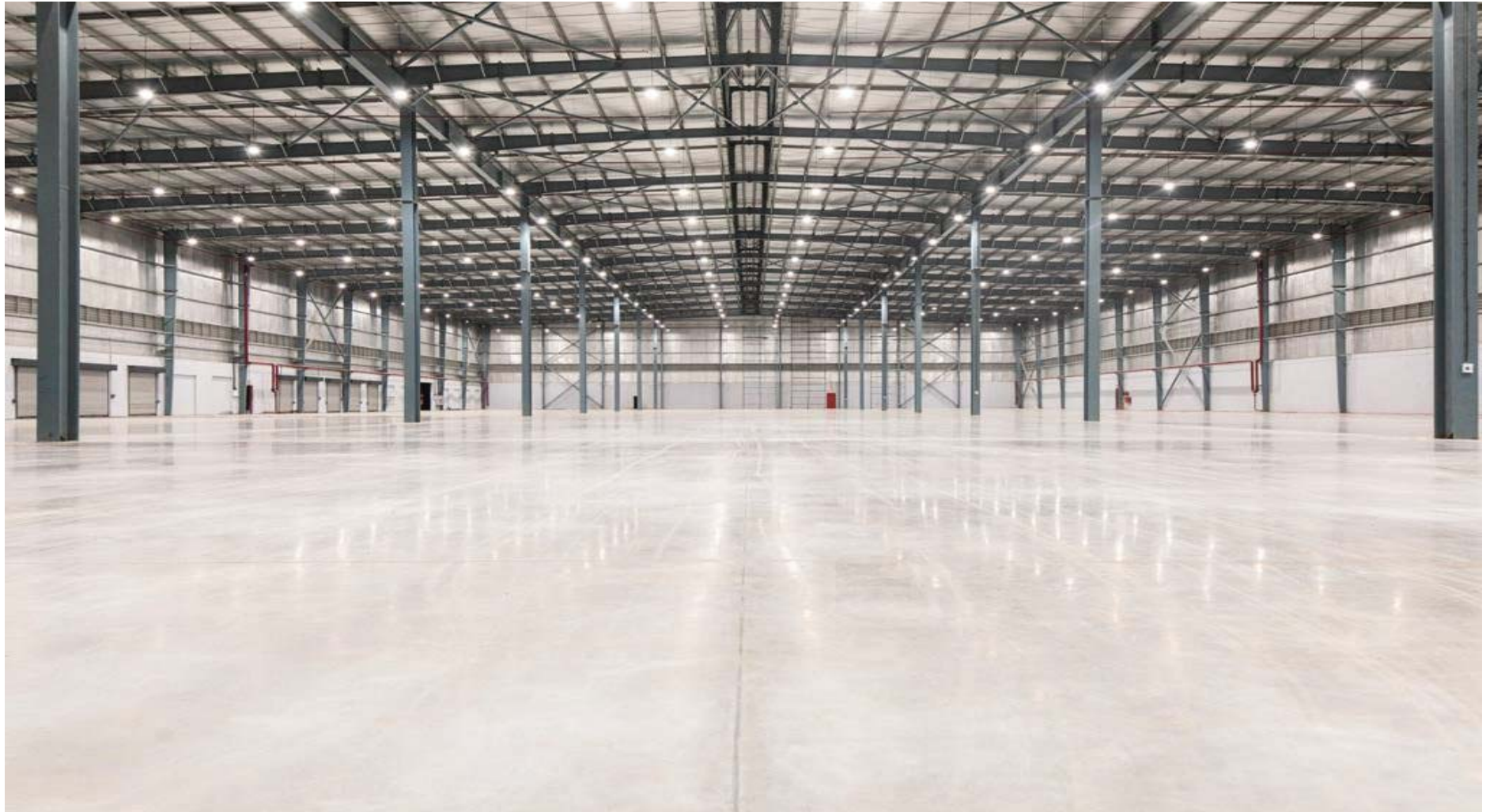
**SUREKA**



**SUREKA**



**SUREKA**





**EUREKA**



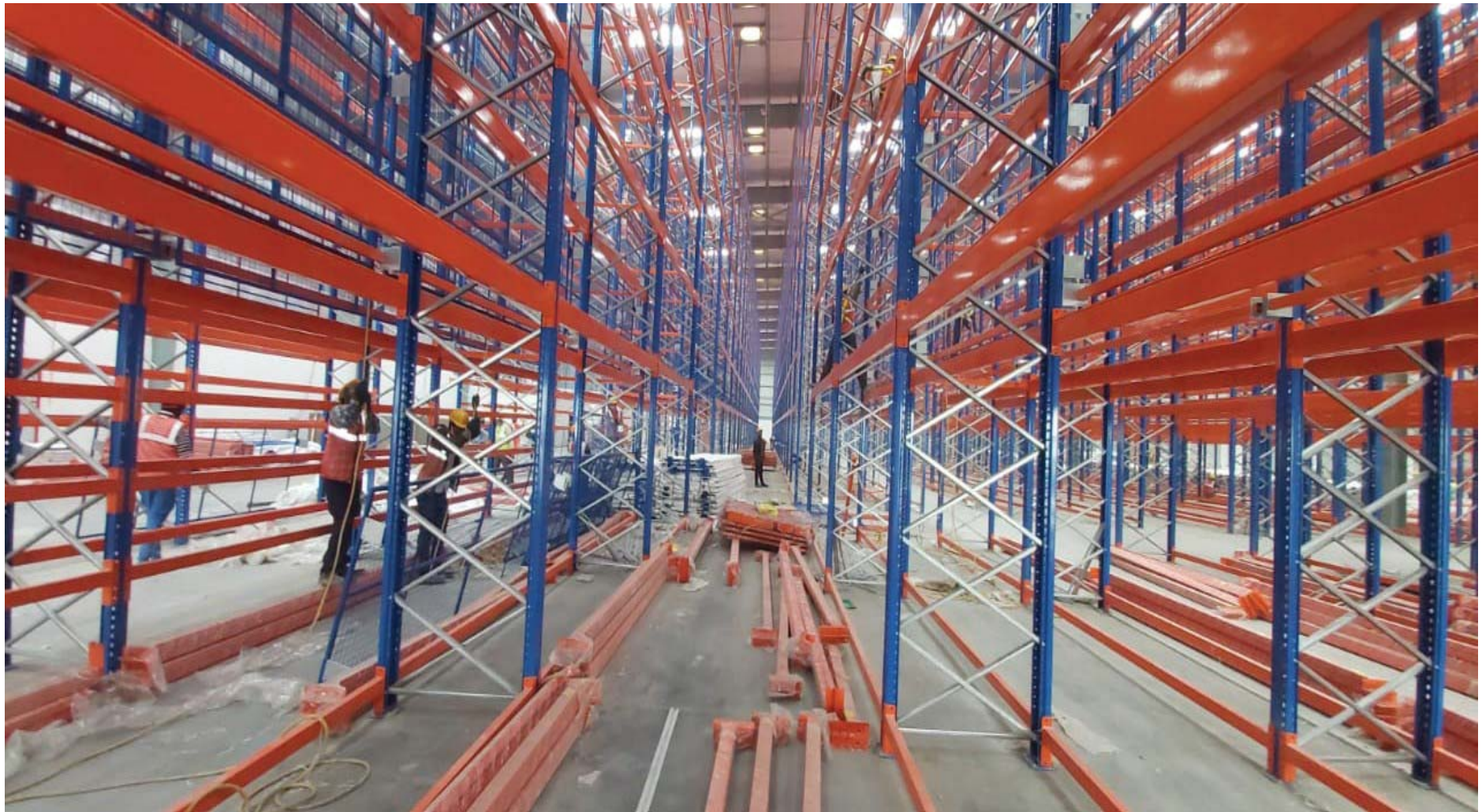
**SUREKA**



**SUREKA**



**SUREKA**



**SUREKA**



**SUREKA**

# SUREKA GROUP

---

## ABHINAV INFRABUILD PVT LTD

207- 208, Industry House, A.B. Road,  
Indore. Phone No : +91-731- 4076601,  
4989601  
Cell No. +91 7049027000

Email : [surefloors@surekaindia.com](mailto:surefloors@surekaindia.com)



**SUREKA**

Sureka Marketing &  
Engineering Pvt Ltd

